

MONITOUCH PLUS EXPRESS

Issue No.16
2009

Data collection (Point of Production System -Operation Management-)

Advantages by using data collection for the operation management

- The operation management system can be introduced to your existing facilities easily. There's no need to modify a PLC program.
- Since you can start with 1 MONITOUCH, the system can be introduced at a low cost.
- Inputting the causes of shutoffs and defects enables more detailed analyses of the operation.
- A troublesome process will be obvious by showing the status of each process on a list all together, and that helps you improve production lines easily.

Improve production operating rates

Grinder operation management system

It enables to grasp the status of production facilities and realizes an efficient facility improvement.

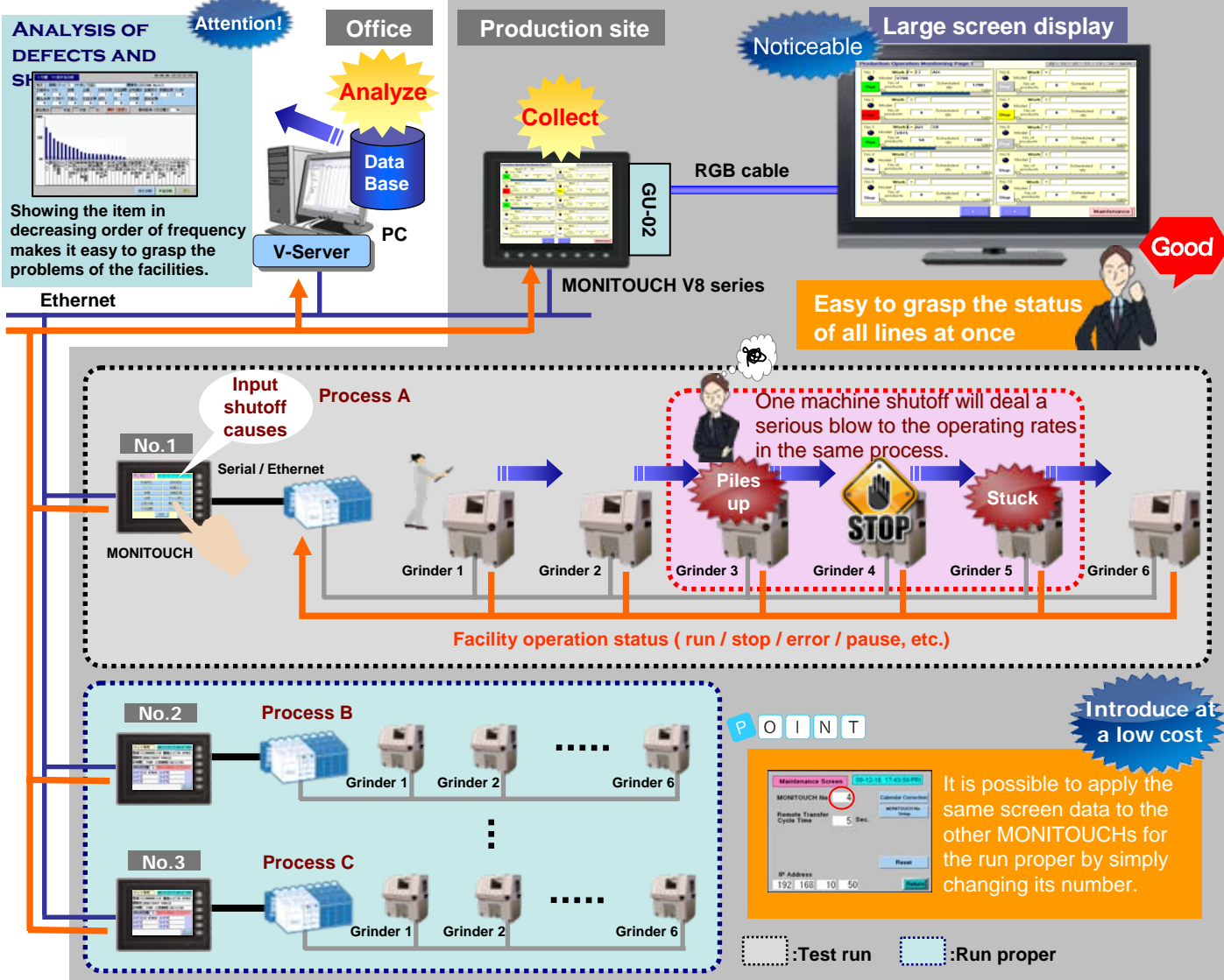
Problem

Products piles up and gets stuck at the previous or next process due to the machine shutoffs in the process.



Collecting & analyzing the operation status using MONITOUCH

The operation status of each process will be collected to the database. Analyzing these collected data helps you to figure out the problems.



Point 1. Inputting the causes of shutoffs/defects (helpful for analyzing operating rates)

Using MONITOUCH allows you to get a clearer grasp of the operating rates and the takt time, which is one of the purposes of the operating management.

Input the causes of shutoffs into the database through MONITOUCH!

Shutoff entry screen

Cancel	Punctual Measure
T.C	Start-up Facility
Breakdown	Backup Others
Check	Short Stoppage
Change Cutting Tool	Purchase Delay
Size Adjustment	Wait for Work

Defects breakout entry screen

Maladjustment	Bore NG	0
Plane roughness	Left	0
Cut. tool broken	Left slot	0
Chip off	Left side surface	0
Set mistake	Rust	0
Dent	Squareness	0
Oversized	Grinding swart	0

POINT

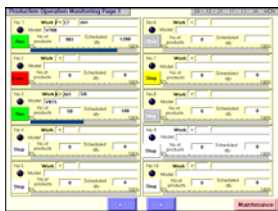
Besides the alarming, many other causes of shutoffs that are not able to be detected by PLC will be collected in detail.

Good

Point 2. Monitoring all at once with the consolidated information

(useful for grasping the operation status)

Production items, scheduled/produced quantities, and details of the alarming of each process will be displayed on a list on the main monitor. It shows a whole line status at a glance.



Operating status displayed all together



OPERATING STATUS DISPLAYED INDIVIDUALLY

POINT

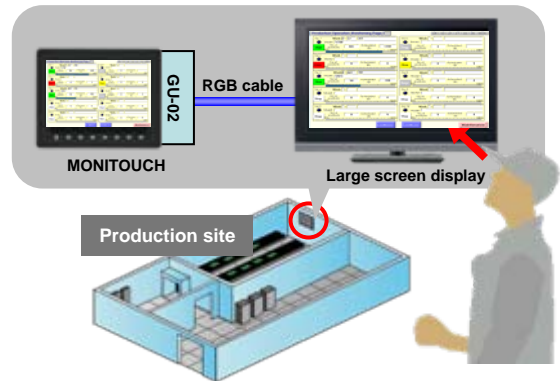
By grasping the production progress and the operating status, efficient production instructions will be given quickly.



Good

A large screen display

MONITOUCH screens can be seen on a larger screen display by installing an RGB output unit (GU-02).



Free version upgrade of the configuration software V-SFT-5



The configuration software (updated version) can be downloaded from the following website.

Website:

<http://www.hakko-elec.co.jp/en/download/09vsft5/index.html#02>